

IMAGINE | DESIGN | CREATE



Legend Elite Series

LASER CUTTING AND ENGRAVING SYSTEMS

Zing Starter Series



MADEiNUSA
EPILOGLASER.COM



Epilog Laser manufactures high-performance CO2 and fiber laser systems that produce unbeatable engraving, cutting and marking results. We also have the most highly-regarded technical support teams in the industry.

We're committed to helping our customers succeed - before, during and after the sale.

Explore our brochure to learn more about our laser systems and to find out why Epilog Laser has been the top choice of engravers for over 20 years.

After you've reviewed our brochure, give our Sales Team a call at 888-437-4564 (+1 303-277-1188) or email sales@epiloglaser.com with any questions.

Epilog Laser

In 1988 Epilog Laser became **the very first manufacturer of small-format laser engraving systems**. Epilog's revolutionary systems opened the world's eyes, not only to what could be accomplished with a laser, but how easy a laser is to use. After many firsts in laser technology, Epilog is proud to still be known throughout the world as the name in small-format laser systems.

Epilog Laser has grown immensely over the past two decades, but the core values that were the foundation of our company have remained the same. We're proud to say that the world's best performing and most reliable laser systems are 100% designed, engineered, manufactured and serviced from our world headquarters in Golden, CO.

We are committed to:

- **Building the Highest Quality Laser Systems**

Each machine we produce is made with the highest quality parts and materials. This means that from our system speed, to the engraving quality, to the long life of our machinery, you won't find a better built machine on the market.

- **Providing the Best Distribution Team**

Our sales team has been with Epilog longer than any other team out there, and most of our distributors have been with us since the very beginning. Rest assured you will always have the most experienced sales and support professionals long after the initial sale.

- **Helping You Succeed in Your Business**

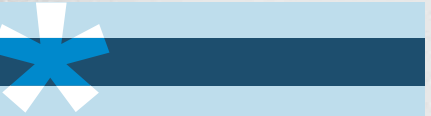
Epilog is known for providing the best aftermarket training programs and resources for our customers. Our web site features the Sample Club with free files to download, the Technical Library with informative how-to articles, as well as our comprehensive whitepaper section. Plus, Epilog offers a Virtual Training Suite and regularly schedules hands-on educational clinics around the country.

- **Providing Technical Support That Exceeds Your Expectations**

Our technical support team is recognized throughout the industry as being the most efficient and knowledgeable. Our specialists can help you troubleshoot any challenges you may encounter and can also provide support on how to achieve better engraving results. From part ordering to technical questions, our tech support team is there to assist you each step of the way.



Epilog Laser's 35,000 sq ft headquarters in Golden, CO.



What is a CO2 Laser System?

The best way to describe how our lasers work is to compare the system to your printer. Using similar technology, we take the images you typically print to paper, but instead of paper you're actually firing a laser beam that engraves and cuts into a wide variety of materials.

The laser beam is created by exciting CO2 gas with electricity to create a very intense beam of invisible light. The beam is directed by our incredibly precise motion control system to cut and engrave almost any material you can imagine.

We've designed our systems to be the safest, easiest-to-use machinery on the market. Epilog's equipment allows you to set up images from any Windows®-based software package and "print" to the laser system. Any image you can create on your computer can be engraved or cut.

Additionally, all of our systems are interlocked for safety and can be used in any environment - from a shop floor, to your office, even to your home.

Designed for Versatility

Business Opportunities

Electronics Engraving
 Wood Engraving & Cutting
 Marble & Stone Etching
 Glass Etching
 Corporate Giveaways
 Laptop & MP3 Player Customization
 Acrylic & Wood Signage
 Wedding Memorabilia
 Nameplates & Desksets
 Appliqués
 Toys & Games
 Wooden Models
 Photo Albums
 Holiday Decorations
 Laser Cut Cards & Invitations
 Custom Jewelry
 Corporate & Sporting Awards
 Acrylic Plaques
 Photo Frames
 One-of-a-Kind Gifts
 Engraved Mirrors
 Architectural Models
 Custom Pet Tags
 Inlaid Signage
 3D Models
 Engraved Denim Jeans
 Photo Engraving
 Barcode Engraving
 Logo Engraving on Parts
 Tool Identification
 Medical Part Marking
 And much more!



* All it takes is one idea.

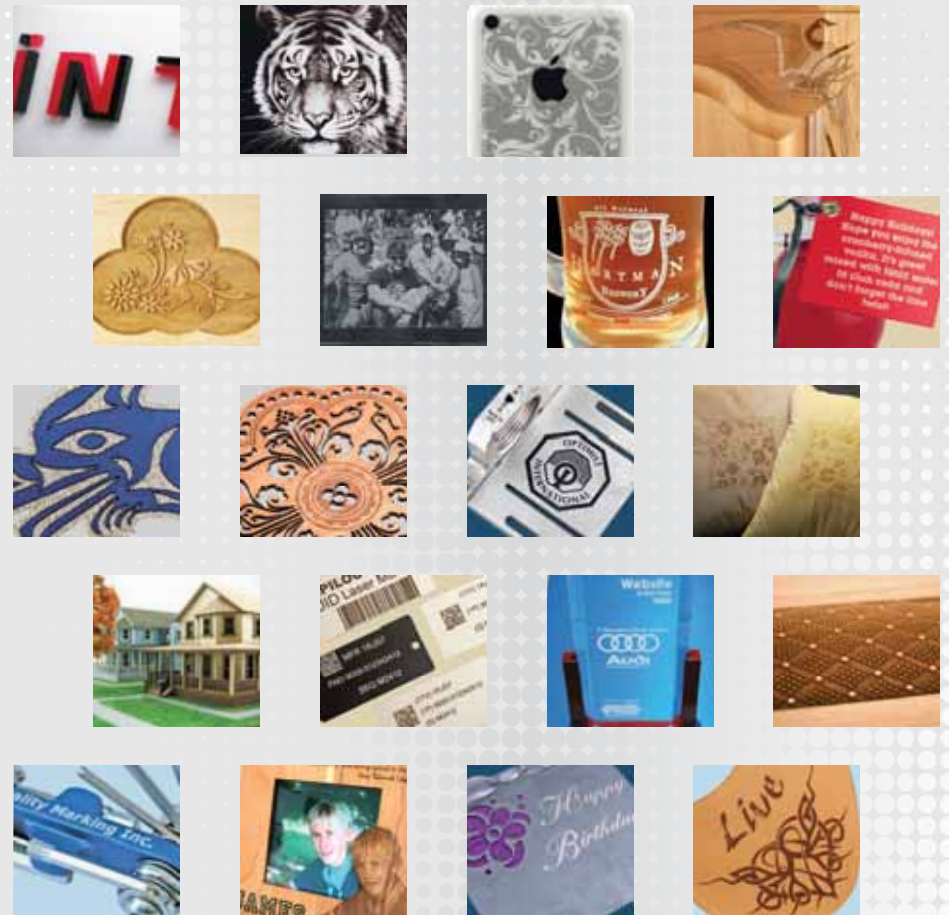
With all of the different products you can engrave with a laser, is it any wonder there are so many successful laser engraving businesses out there? It truly takes just one great idea that's well marketed to create a successful business.

	Engrave	Cut
Wood	x	x
Acrylic	x	x
Glass	x	
Coated Metals	x	
Ceramics	x	
Delrin	x	x
Cloth	x	x
Leather	x	x
Marble	x	
Mat Board	x	x
Melamine	x	x
Paper	x	x
Mylar	x	x
Pressboard	x	x
Rubber	x	x
Wood Veneer	x	x
Fiberglass	x	x
Painted Metals	x	
Tile	x	
Plastic	x	x
Cork	x	x
Corian	x	x
Anodized Aluminum	x	
Twill	x	x
Stainless Steel	*	
Brass	*	
Titanium	*	
Bare Metal	*	

* CO2 lasers will mark bare metals when coated with a metal marking solution. For more information, call (+1) 303-277-1188.

What will you create?

Epilog's systems are versatile and produce the highest quality results. The engraving possibilities are endless!



Epilog Zing Starter Series



The Zing Starter Series is our line of fully-featured, high-quality laser systems, ideal if you're just getting started in engraving or are working within a limited budget.

The Epilog Zing 16 Laser

Small-size, entry-level laser system that is perfect for starting a business or to operate out of your home.

- Affordable pricing for the entry-level user.
- 16" x 12" (406 x 305 mm) work area is a great size for custom engraving individual pieces.
- Power choices of 30 or 40 watts.

The Epilog Zing 24 Laser

Larger work area and more features make this laser an affordable choice for those needing more features than an entry-level machine.

- 24" x 12" (610 mm x 305 mm) work area.
- Radiance™ High-Resolution Optics for a smaller laser spot size across the table.
- Power choices up to 60 watts to engrave faster and cut through thicker materials.
- Epilog's Super-Silent™ cooling fans for quiet operation.
- Easy-Access Drop-Down Door for inserting a jig of parts in the system.

Affordable, High-Quality Engraving

When Epilog Laser designs an entry-level system, it's anything but entry-level quality. We are renowned for our systems' unmatched engraving detail, and we've carried that through to our Zing Laser Starter Series.

Easy to Set Up and Begin Engraving

If you already use any graphic design software, you can be up and running the Zing Laser in no time. Just install the print driver and start creating your projects!

- There is no special software to learn (no expensive training of new employees!)
- Receive free, ongoing access to our Virtual Training Suite.
- Hook up your laser through USB or Ethernet connections, or even wirelessly with a router!



Epilog Zing Laser FAQs

First, let's cover the basics. Here are some of the most common questions we receive about the Zing Laser:

Q: Can your Starter Series create the same quality engravings that I see from the rest of Epilog's product line?

A: Yes! Even our famous Aztec Calendar engraving is engraved on the Zing Laser. The Zing is not as fast as our Elite Series, but the image quality is pure Epilog.

Q: Does the same laser work on every material you show?

A: Yes! From wood to acrylic to marble to glass, just adjust your speed and power settings for the different materials you want to engrave.

Q: Can I make money with a Zing Laser?

A: Yes! Personalization and customization of products is in high demand and adds amazing value to any product you create.

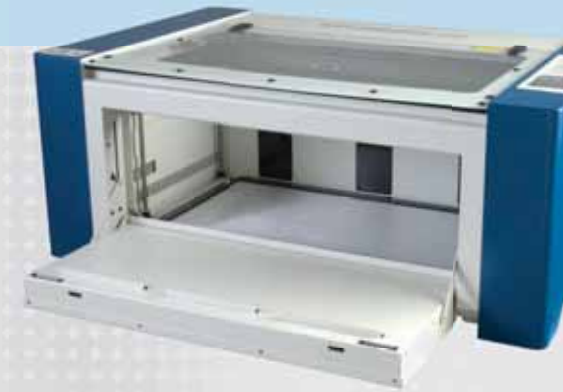
Q: How difficult is it to get started engraving on the Zing Laser?

A: If you know how to use graphic design software, you can be up and running in minutes. Initially, there will be a bit of trial and error to learn what power and speeds to use with different materials, but we include a comprehensive guide with your system that has recommended laser settings for common materials that are used with the laser.

Starting an Epilog Zing Business!

The Zing Laser is becoming a fast favorite for those looking to start a profitable business. The affordable price combined with the system's versatility are an ideal combination. Plus, with low lease-to-own monthly payment options, you can pay for the system as you make money!

Contact your distributor for lease-to-own information.



Why the Epilog Zing Laser?

Of all the low-cost laser systems on the market, why is the Zing Laser the top choice for most laser buyers? The Zing Laser is unique for its ability to provide you with **high-resolution engraving and cutting at a very low cost.**

- You can network the laser to several computers with the standard Ethernet connection.
- Epilog's **Virtual Training Suite** will walk you through several projects - and you'll have finished samples when you are done!
- Our Made-in-the-USA quality is unmatched.
- We have an unbeatable technical support team that will get (and keep) you up and running.

Stunning engraving results will keep customers coming back to your business. Without sacrificing quality, Epilog allows you to get the machine you need at a price you can afford.

Engrave a high-resolution image on a Zing and a competitor's machine - you'll see that the Zing Laser is the choice for high-quality engraving at the fastest speeds for an entry-level laser system.

Epilog Zing Laser Features - Packed with features to help you succeed.

Red Dot Pointer: Provides a visible laser beam to help position your projects.

Laser Dashboard™: Our print driver where you can choose from the Zing's many features.

Waveguide Laser Tubes: Long-lasting, all-metal tubes for the best engraving quality.

High-Speed Stepper Motors: Faster stepper motors that provide high-resolution engravings.

Raster/Vector Color Mapping: Change your speed and power by using color settings.

Air Assist Curtain: Remove heat and combustible gases from the cutting surface.

3D & Stamp Engraving Settings: Etch & cut stamps or create 3D effects on your engraving.

Networking Choices: USB and Ethernet connections, or connect wirelessly with a router.

Lenses Rated to 500 Watts: Highest quality lenses provide long life and higher resolutions.

Moveable Home Position: Engrave oddly-shaped items easily by setting a new home position.

Made-in-the-USA Quality: 100% designed, engineered, and built in Golden, CO.

Super-Silent™ Cooling Fans: Quiet operation by reducing time fans are turned on.

Radiance™ Beam Enhancing Optics: Higher resolution optics for detailed engraving.

Easy-Access Drop-Down Door: Front access door for the laser system.

Compatibility with Rotary Attachment: Engrave glasses and mugs with the optional Rotary.

	Zing 16	Zing 24
Red Dot Pointer	x	x
Laser Dashboard™	x	x
Waveguide Laser Tubes	x	x
High-Speed Stepper Motors	x	x
Raster/Vector Color Mapping	x	x
Air Assist Curtain	x	x
3D & Stamp Engraving Settings	x	x
Networking Choices	x	x
Lenses Rated to 500 Watts	x	x
Moveable Home Position	x	x
Made-in-the-USA Quality	x	x
Super-Silent™ Cooling Fans	x	x
Radiance™ Beam Enhancing Optics		x
Easy-Access Drop-Down Door		x
Compatibility with Rotary Attachment		x



Crystal Clear™ Optics System

If any part of the system becomes contaminated through use, none of the other parts can work properly. With this in mind we designed the Crystal Clear™ Optics System to ensure years of exceptional performance.

Industrial grade ZnSe lenses and single crystal silicon mirrors rated to over 500 watts are used in all of our laser systems. We've designed the system with easily-removable lenses to make maintenance quick and easy to perform without tools.

Air Assist Curtain

By directing a constant stream of compressed air across the cutting surface, the possibility of flaming, scorching and charring is greatly reduced when working with materials such as wood, acrylic and rubber.

The Air Assist assembly can be easily connected to a standard compressed air supply (30 psi / 2.07 bar max) or the optional stand-alone compressor offered by Epilog.



Air Assist Curtain holes on underside of x-axis rail



Red Dot Pointer

This is one of our customers' favorite features, as it provides a visible red laser beam that indicates the exact laser engraving or cutting location within the engraving table. Use the Red Dot Pointer to preview your engraving or cutting position on uniquely-shaped items.



Waveguide Laser Tubes

Different types of laser tubes produce different types of laser beams. Oval-shaped beams, inconsistent power stability and slow switching rates all contribute to less-than-stellar engravings that are not as crisp and clean as engravings produced by an Epilog. Our Waveguide laser technology simply produces the best results.

Waveguide laser tubes:

- Produce the best beam quality in the industry.
- Have higher CO2 gas pressure.
- Operate with faster switching rates and a smaller bore.
- Are made of metal (not glass!) for a long life.



High-Speed Stepper Motors

The Zing Laser Starter Series utilizes high-speed stepper motors to drive the laser positioning. Designed for affordable, high-quality design, these stepper motors provide the highest quality engraving results that you've come to expect from all of Epilog's laser engraving and cutting systems.

Epilog Zing Laser Optional Accessories

Vector Grid

When you are cutting through materials, the Zing's Vector Grid will quickly become one of your favorite accessories. The grid raises the material you're cutting off the table, which dramatically reduces back-side burning on any material you cut. The air space below the vector grid is connected to the exhaust, so smoke is removed not only from the top side of the material, but also from the underside.

Air Compressor

Attach Epilog's Air Compressor to the Air Assist Curtain to direct a constant stream of air over the work surface. This high-quality compressor ensures you get excellent cutting results every time you use your system. This air compressor unit feeds 30 psi (2.07 bar) of air through the Air Assist structure, giving you the best cutting results available.

Zing 24 Rotary Attachment

Engrave wine bottles, mugs, glasses, flashlights or any other cylindrical item up to 5.25" (133.4 mm) in diameter on the Epilog Zing 24 Laser. So intuitive and easy to use, you can switch from one glass to the next in seconds - without even removing the attachment from the engraver! In addition, our proprietary design provides accurate image scaling, so there's no need to input diameter or circumference calculations.



Legend Elite Series Laser Systems

Mini 18 Laser



Looking for a system that features the latest technology with faster engraving times than the Starter Series, but still offers a small work area? The Mini 18 Laser is an ideal way to break into our Legend Elite Series with an 18" x 12" x 4" (457 x 305 x 102 mm) work area. Because the Mini 18 does not compromise on features, engraving or build quality, it has established itself as *the* choice for an affordable, small-format laser.

- High-Speed Servo Motors and Linear Encoder driven.
- Power choices up to 40 watts
- Compact size to fit on a desk in your office.

Mini 24 Laser

Need a larger work table, but still want the quality of the Legend Elite Series? Move up to the Mini 24 Laser, which features a 24" x 12" x 5.5" (610 x 305 x 139.7 mm) engraving area.

- Features Radiance™ High-Resolution Optics for a smaller laser spot size across the table.
- Power choices up to 60 watts to engrave faster and cut through thicker materials.
- Easy-Access Drop-Down Door for inserting a jig of parts in the system.



Helix 24 Laser

For engravers looking to work with larger engraving pieces, the Epilog Helix is an ideal choice. The Helix's generous 24" x 18" x 8.5" (610 x 457 x 215.9 mm) engraving area will allow you to engrave multiple pieces as well as thicker materials, such as boxes and vases.

Power choices up to 75 watts allow you to cut through thicker materials, as well as produce deeper, faster engraving in materials that demand more power.

- Radiance™ High-Resolution Optics for a smaller laser spot size across the table.
- Easy-Access Drop-Down Door for loading jigs from the front of the machine.
- Easy-Access Storage Stand to easily move your laser throughout your office.



Legend 36EXT Laser

The Legend 36EXT is the culmination of laser achievement. There is no other laser system that combines the features, performance and price of the 36EXT. With a robust design to tackle the most challenging projects, the 36EXT provides the highest quality engraving and cutting capabilities combined with a large 36" x 24" x 12" (914 x 610 x 305 mm) work area.

By including our Radiance High-Resolution Optics, we can provide the most consistent beam quality over the entire work table. For applications requiring the highest laser power, we provide 120 watts from a single laser tube design.

- Permanent job storage of the jobs you access most often.
- Power choices up to 120 watts for the fastest engraving and deepest cutting capabilities.
- Robust, self-lubricating, stainless steel bearings and double-wide Kevlar belts.



The Legend 36EXT: Epilog's highest performance, most industrial CO2 laser system.

30 / 2 hrs

Legend Elite Series

Engrave 30 desksets in 2 hours.



22 / 2 hrs

Zing Starter Series

Engrave 22 desksets in 2 hours.



Higher speeds of the Legend's Accupoint Motion Control System allow you to increase your throughput to 30 desksets in the same amount of time on the same wattage of laser.

Why Upgrade to the Legend Elite Laser Series?

Move up to the Legend Elite Series to see the best that Epilog has to offer! Standard features found in all Elite Series systems include:

- Auto Focus and Air Assist make for optimum engraving and cutting quality.
- Servo motors and linear encoders are at the heart of the most advanced motion control system in the industry.
- Integrated Vector Cutting Grid and Vacuum Hold-Down Table.
- Servo motor driven for the fastest engraving speeds.
- Stainless steel bearings to last the life of the machine.
- Up to 1200 dpi engraving resolution.

To find out if the Legend Elite Series is right for you, look at your future needs. If you are planning for more throughput and engraving larger items, the industrial Legend Elite Series is the choice for you!

Legend Elite Series Features

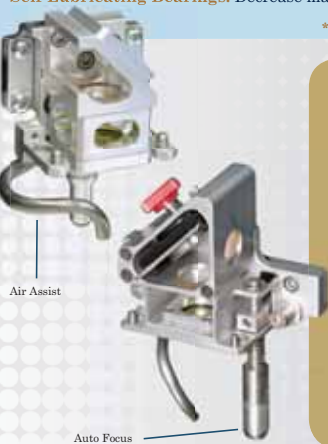
	Mini 18	Mini 24	Helix 24	36EXT
Red Dot Pointer: Provides a visible laser beam to help position your projects.	x	x	x	x
Accupoint™ Motion Control: Firing the laser in the right place at the right time.	x	x	x	x
Laser Dashboard™: Our print driver where you can choose from many engraving features.	x	x	x	x
Linear Encoders: Highest quality engraving from the most precise motion control system.	x	x	x	x
NeverWear™ Bearings: Stainless steel bearings designed to last the life of the machine.	x	x	x	x
Kevlar Belts: Our precision drive belts are made from B-style Kevlar for superior life.	x	x	x	x
Waveguide Laser Tubes: Long lasting, all-metal tubes for the best engraving quality.	x	x	x	x
High-Speed Servo Motors: Faster servo motors that provide high resolution engraving.	x	x	x	x
Raster/Vector Color Mapping: Change your speed and power by using color settings.	x	x	x	x
Air Assist: Remove heat and combustible gases from the cutting surface.	x	x	x	x
3D & Stamp Engraving Settings: Etch & cut stamps or create 3D curves on your engraving.	x	x	x	x
Networking Choices: USB and Ethernet connections, or connect wirelessly with a router.	x	x	x	x
Lenses Rated to 500 Watts: Highest quality lenses provide long life and higher resolutions.	x	x	x	x
Moveable Home Position: Engrave odd-shaped items easily by setting a new home position.	x	x	x	x
Made in the USA Quality: Designed, engineered, and built in Golden, CO.	x	x	x	x
Compatibility with Rotary Attachment: Engrave glasses and mugs with the optional Rotary.	x	x	x	x
Integrated Vector Cutting Grid: Lifts the piece being cut to reduce back-side burning.	x	x	x	x
Integrated Vacuum Table: Holds down thin sheet stock.	x	x	x	x
Super-Silent™ Cooling Fans: Quiet operation by reducing time fans are turned on. **	x	x	x	x
Permanent Job Storage: Store the jobs you run most often at the laser (up to 10, 2 mb files)	x	x	x	x
Job Delete at the Laser: Delete old jobs to keep your laser job queue organized.	x	x	x	x
Vector Table Crumb Tray: Easily dispose of debris from under your Vector Cutting Grid.	x	x	x	x
Easy-Access Drop-Down Door: Front access door for the laser system.	x	x	x	
Radiance™ Beam Enhancing Optics: Higher resolution optics for detailed engraving.		x	x	x
Easy-Access Storage Stand: Wheeled, free-standing cart for easier access.			x	x
Emergency Stop Button: Stop the laser immediately with this front-positioned button.			x	
Inside Focus Button: With the door raised, easy access to focus the laser.			x	
Brushless Servo Motors: Most robust servo motors that are available.			x	
Self-Lubricating Bearings: Decrease maintenance with self-lubrication of the bearings.			x	

**Super-Silent Cooling Fans not available with the Legend 36EXT 120 watt configuration.

Auto Focus and Air Assist

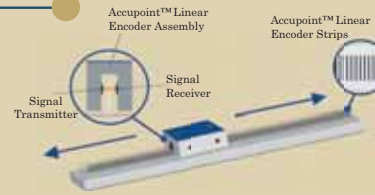
Epilog provides Auto Focus and Air Assist as standard features throughout our Legend Elite Series. Air Assist is most commonly used in vector cutting applications to remove heat and combustible gases from the cutting surface. By directing a constant stream of compressed air across the cutting surface, the possibility of flaming, scorching and charring is reduced. All systems can be connected to a standard compressed air supply (30 psi / 2.07 bar max).

To achieve optimum image and edge quality, the laser beam is focused to the smallest possible spot size at the point of engraving. Our Auto Focus feature uses magnetic plunger technology to precisely position the table automatically with every job. It's the most convenient method of focusing and even works on transparent surfaces, including glass and acrylic.



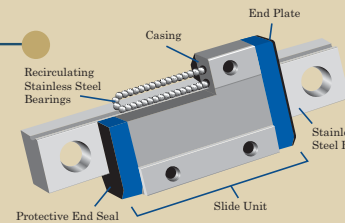
The Precision of the Accupoint™ Motion Control System

Firing the laser in the right place at the right time is the concept behind the Legend Elite's Accupoint™ Motion Control Technology. While it's easy to see the extraordinary level of detail in our engravings at any resolution, the engineering behind our equipment is what makes this accuracy possible. At 1200 dpi, the entire motion control system is moving in increments as small as .00008" (.02 mm), which is the result of a special blend of high-quality components available only on the Legend Elite Series.



Linear Encoder

For the most precise method of determining the laser position, the Accupoint system utilizes Linear Encoders. These encoders provide critical timing information that synchronizes the motion control system to the firing of the laser. Mounted directly to the moving carriage, the linear encoders provide crisp, clean images, even at the highest speeds.



NeverWear Stainless Steel Bearings

Epilog's NeverWear bearings provide the accuracy, repeatability and precision that demanding laser applications require. Built with at least 64 stainless steel bearings in each slider unit, our NeverWear bearings can operate at the highest speeds, day in and day out without worry about failure, replacement, or the inevitable wobble that less robust bearing systems experience.



Servo Motors

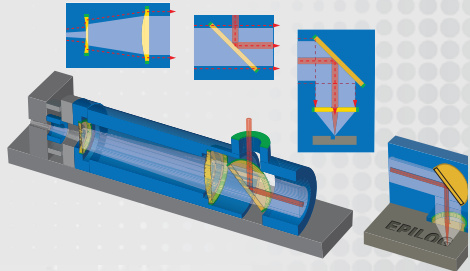
The ability of a motor to move smoothly at high speeds is a key component to the Accupoint System. Closed-loop, DC servo and brushless DC servo motors (EXT only) are known for their incredibly fast acceleration and deceleration speeds, as well as their ability to operate without the cogging seen in less accurate motors.

Super-Silent™ Cooling Fans

Available exclusively from Epilog, our Super-Silent™ fan cooling system allows you to operate your laser equipment with minimal background noise. CO2 lasers require air-cooling from a series of fans which can often be noisy and disruptive, especially if the machine is located in a central or small area used by many people. Epilog has developed a unique method of drastically decreasing the amount of noise generated from the cooling fans. In fact, Epilog systems are the only ones in the industry that allow you to converse in normal tones while the machine is operating, even if standing directly over the machine! These Super-Silent Cooling Fans make for a much more comfortable and productive work area.



Legend Elite Series Features



Radiance™ High-Resolution Optics

Our Radiance High-Resolution Optics help us produce the sharpest laser beam in the industry, which provides the most detailed engraving and cutting results available.

After the laser beam leaves the laser tube, it passes through a set of two optical components that straighten and expand the beam. This set of optics dramatically reduces beam divergence and produces a laser beam that maintains its size and straightness across the entire engraving table.

Radiance High Resolution Optics Provides:

- A more uniform spot, which results in more detailed engravings. In systems that don't feature Radiance Optics, the beam diverges and you'll see less detailed engravings in the corner of the table. Epilog's Radiance Optics ensure a consistent result across the entire table.
- Smaller spot size: A smaller spot size means you can produce finer detail in engraving and cutting applications.
- Rounder spot size: A laser spot that is as close to circular as possible produces laser characteristics that are the same in both the X and Y directions, providing crisper, more consistent engraving and cutting.
- Higher power density: When focused to a smaller spot, the beam's power density increases for more power in a smaller area, and a deeper, darker mark.

Integrated Vector Cutting Grid and Vacuum Table

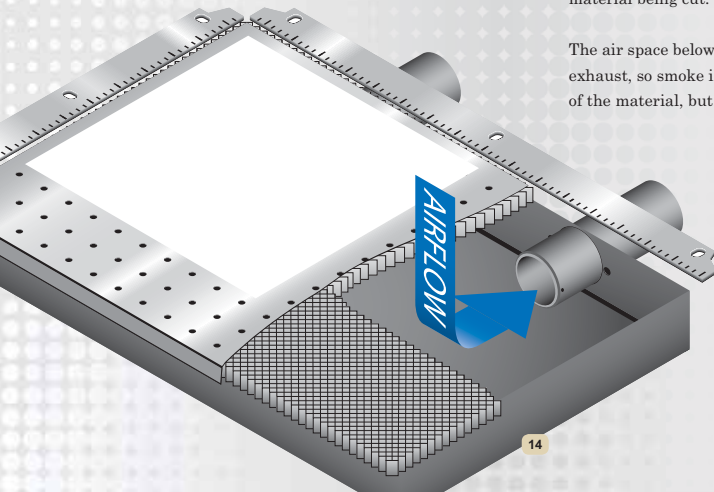
Vacuum Table

The Vacuum Hold-Down Table uses the air from your exhaust fan to hold thin sheet stock flat. This built-in feature is a huge time-saver when engraving and cutting plastic, aluminum sheet stock, thin wood and any other material that won't lie flat on its own.

Vector Cutting Grid

Our Integrated Vector Cutting Grid is included standard on our Legend Elite Series and is a robust 1" (25.4 mm) thick. Simply remove the Task Plate and place the Vector Cutting Grid in the system to dramatically reduce underside reflections from burning the back side of the material being cut.

The air space below the vector grid is connected to the exhaust, so smoke is removed not only from the top side of the material, but also from the underside.



Legend Elite Series Accessories

Rotary Attachment

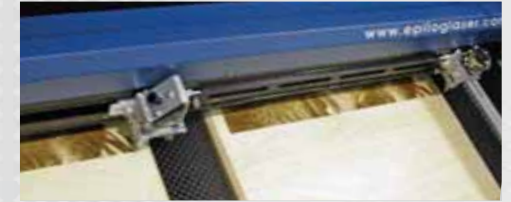
This handy attachment gives you the ability to engrave mugs, bottles, glasses, flashlights, vases, and other cylindrical items.

Designed for ease of use, you can quickly engrave a glass, move to a wine bottle, then to a vase without removing the attachment. Place your item on the Rotary and start engraving!



Double Head Attachment (EXT Only)

Engrave two identical products at the same time by splitting the laser beam in two. With the large 36" x 24" x 12" (914 x 610 x 305 mm) work area of the Legend 36EXT, users are able to dramatically increase their engraving and cutting throughput with the Double Head Attachment.



Air Compressor

Available to work with the included Air Assist feature, the compressor will direct a constant stream of air to the cutting surface to remove heat and combustible gases.

Mini Laser Stand

If you prefer to have a free-standing Mini 18 or 24, you can add this wheeled cart, specially designed for the Mini Laser line. It will allow you to quickly and easily move your machine throughout your office or home.

Vector Pin Table

The Pin Table incorporates moveable pins designed to raise and support the areas of a piece of material that won't be cut. This helps ensure you receive the cleanest side cuts from your laser system.

Optional Lenses

In addition to the standard 2.0 inch lens, we offer special lenses you can use for specific applications:

1.5" Lens: High-Resolution Engraving

Although the standard 2.0 inch lens on the Legend Elite Series provides amazing detail (including the stunning Aztec Calendar sample), our 1.5 inch lens assembly has been designed for the highest resolution engraving and etching of extremely small fonts.

4.0" Lens (EXT Only)

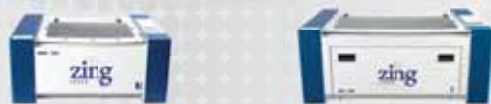
The 4.0 inch lens produces a focused beam over a longer vertical distance, which makes it ideal when engraving within a recessed area of a product, such as inside a bowl or plate. The lens is also used for cutting through very thick materials.

Cone Lens

The Cone Lens Assembly provides another option for deep cutting with the laser. If you are cutting through 0.5 inch or more hardwoods and acrylics, the Cone Lens may be the right choice for you.

Technical Specs

Epilog Zing Laser Series



	Epilog Zing 16 Laser	Epilog Zing 24 Laser
Maximum Engraving Area	16" x 12" (406 x 305 mm)	24" x 12" (610 x 305 mm)
Max Material Thickness	4.5" (114 mm)	7.75" (197 mm)
Laser Tube Wattages	30 and 40 watt, air-cooled all-metal Waveguide tube, 1062 micrometers.	30, 40, 50 and 60 watt, air-cooled all-metal Waveguide tube, 1062 micrometers.
Standard Features	Air Assist, Motorized Table, Red Dot Pointer, 2" (51 mm) Focus Lens, Relocatable Home, Laser Dashboard, Shielded Roller Bearing Assembly, Super-Silent Cooling Fans	Zing 16 features, plus Radiance High-Definition Optics, Easy Access Drop-Down Door, Laser Head Parking, Super-Silent Cooling Fans
Intelligent Memory Buffer	Store unlimited files up to 64 MB. Rolling buffer allows files of any size to be engraved.	
Operating Modes	Optimized Raster, Vector and Combined mode.	
Motion Control System	High-speed micro stepper motors.	
X-Axis Bearings	Shielded roller bearing assembly on a ceramic-coated aluminum guide rail.	
Belts	Advanced B-style Kevlar Belts.	
Resolution	User-controlled from 100 to 1000 dpi.	
Speed and Power Control (engraving depth)	Computer or manually controlled speed and power in 1% increments to 100%. Vector color mapping links Speed, Power, Frequency, Focus, and Raster/Vector mode settings to any RGB color.	
Print Interface	10Base-T Ethernet or USB Connection. Compatible with Windows XP/Vista/7.	
Size (W x D x H)	28.75" x 22.125" x 11.75" (W x D x H) (730 x 562 x 298 mm)	38" x 27.25" x 15" (W x D x H) (965 x 692 x 381 mm)
Weight	95 lbs. (43 kg)	140 lbs. (64 kg)
Electrical Requirements	Auto-switching power supply accommodates 110 to 240 volts, 50 or 60 Hz, single phase, 15 amp AC.	
Ventilation System	External exhaust to the outside is required. There is one output port, 4" (102 mm) in diameter.	
Laser System Classification	Class 2R Laser Product - 1 mW CW MAXIMUM 600-700 nm	

Legend Elite Series



	Epilog Mini 18 Laser	Epilog Mini 24 Laser	Epilog Helix Laser 24	Epilog Legend 36EXT
Maximum Engraving Area	18" x 12" (457 x 305 mm)	24" x 12" (610 x 305 mm)	24" x 18" (610 x 457 mm)	36" x 24" (914 x 610 mm)
Max Material Thickness	4" (102 mm). Remove Table for 6" (152 mm) depth and 17.5" x 10" (444 x 254 mm) engraving area.	5.5" (140 mm). Remove Table for 8" (203 mm) depth and 23.5" x 11.75" (597 x 298 mm) engraving area.	8.5" (216 mm). Remove table for 11" (279 mm) depth and 23.5" x 17" (597 x 432 mm) engraving area.	12" (305 mm). Remove table for 14" (355 mm) depth and 36" x 24" (914 x 609 mm) engraving area.
Laser Tube Wattages	30 and 40 watts, air-cooled all-metal Waveguide tube, 1062 micrometers.	30, 40, 50, and 60 watts, air-cooled all-metal Waveguide tube, 1062 micrometers.	30, 40, 50, 60, and 75 watts, air-cooled all-metal Waveguide tube, 1062 micrometers.	30, 40, 50, 60, 75, and 120 watts, air-cooled all-metal Waveguide tube, 1062 micrometers.
Standard Features	Air Assist, Auto Focus, Red Dot Pointer, Integrated Vector Grid & Vacuum Table, 2" (51 mm) Focus Lens, Relocatable Home Position, Permanent Job Save with 10 job maximum, each less than 2 MB, Easy-Access Drop-Down Door, Super-Silent Cooling Fans	Radiance™ High Definition Optics, Air Assist, Auto Focus, Red Dot Pointer, Integrated Vector Grid & Vacuum Table, 2" (51 mm) Focus Lens, Relocatable Home Position, Permanent Job Save with 10 job maximum, each less than 2 MB, Easy-Access Drop-Down Door, Super-Silent Cooling Fans	Radiance™ High Definition Optics, Air Assist, Auto Focus, Red Dot Pointer, Integrated Vector Grid & Vacuum Table, 2" (51 mm) Focus Lens, Relocatable Home Position, Permanent Job Save with 10 job maximum, each less than 2 MB, Easy-Access Drop-Down Door, Integrated Floor Stand, Super-Silent Cooling Fans	Radiance™ High Definition Optics, Air Assist, Auto Focus, Red Dot Pointer, Integrated Vector Grid & Vacuum Table, 2" (51 mm) Focus Lens, Relocatable Home Position, Permanent Job Save with 10 job maximum, each less than 2 MB, Integrated Floor Stand, Brushless Servo Motors, Super-Silent Cooling Fans (except 120 watt)
Intelligent Memory Buffer	Store unlimited files up to 64 MB. Rolling buffer allows files of any size to be engraved.			
Operating Modes	Optimized Raster, Vector and Combined mode.			
Motion Control System	High-speed, continuous-loop, DC servomotors using linear and rotary encoding technology for precise positioning.			High-speed, continuous-loop, brushless DC servomotors using linear and rotary encoding technology for precise positioning.
X-Axis Bearings	Ground and polished stainless steel NeverWear™ Bearing system.			NeverWear™ Bearing system with self-lubricating bearings.
Belts	Advanced B-style double-wide Kevlar precision drive belts.			
Resolution	User controlled from 75 to 1200 dpi.			
Speed and Power Control (engraving depth)	Computer or manually-controlled speed and power in 1% increments to 100%. Vector color mapping links Speed, Power, Frequency, Raster/Vector mode, and Air Assist On/Off settings to any RGB color.			
Print Interface	10Base-T Ethernet or USB Connection. Compatible with Windows XP/Vista/7.			
Size (W x D x H)	27.8" x 26" x 13.5" (W x D x H) (706 x 660 x 343 mm)	34.5" x 26" x 16" (W x D x H) (876 x 660 x 406 mm)	36.5" x 32" x 39.8" (W x D x H) (927 x 813 x 1011mm)	50.5" x 36" x 42" (W x D x H) (1283 x 914 x 1067 mm)
Weight	70 lbs (32 kg) - 100 lbs (45.5 kg) w/stand	90 lbs. (41 kg) - 120 lbs (55 kg) w/stand	180 lbs max (82 kg)	440 lbs max (199 kg)
Electrical Requirements	Auto-switching power supply accommodates 110 to 240 volts, 50 or 60 Hz, single phase, 15 amp AC.			
Ventilation System	External exhaust to the outside is required. There is one output port, 4" (102 mm) in diameter.			External exhaust to the outside required. There are two output ports, each 6" (152 mm) in diameter.
Laser System Classification	Class 2R Laser Product - 1 mW CW MAXIMUM 600-700 nm			

For system pricing information and to set up your personal demonstration, call your local distributor. To find your distributor, visit www.epiloglaser.com/distributors.htm

Technical specifications and product configurations subject to change without notice.

Legend 36EXT



Epilog Laser
16371 Table Mountain Parkway
Golden, CO 80403
(+1) 303-277-1188
888-437-4564
sales@epiloglaser.com
www.epiloglaser.com

Rev #0310

MADE IN USA

EPILOGLASER.COM



LASER RADIATION
AVOID DIRECT EYE EXPOSURE
CLASS 2R LASER PRODUCT

1 mW CW MAXIMUM 600 - 700 nm